

Great North Road Solar And Biodiversity Park

Environmental Statement

Volume 4 – Technical Appendices

Technical Appendix A11.8: Outline Archaeological Mitigation Strategy

Document reference – EN010162/APP/6.4.11.8CB

Revision number 43

March~~February~~ 2026

Infrastructure Planning (Applications: Prescribed Forms and Procedure) Regulations 2009, APFP Regulation 5(2)(a)

Contents

A11.8.1	Introduction	3
A11.8.1.1	Project Background	3
A11.8.1.2	Purpose and scope of document	3
	Relationship of the Outline AMS and Phase Specific Written Schemes of Investigation	5
A11.8.1.3	Roles and Responsibilities	5
A11.8.2	Planning Background and Technical Guidance	7
A11.8.2.1	Legislative and Planning Background	7
A11.8.2.2	Relevant Guidance	7
A11.8.3	Stage 1: Pre-Consent Archaeological Investigation	8
A11.8.3.1	Previous Investigation and Assessment	8
A11.8.3.2	Results	13
A11.8.4	Stage 2: Post-consent Archaeological Investigation	13
A11.8.4.1	Introduction	13
A11.8.4.2	Geophysical Survey	13
A11.8.4.3	Geoarchaeological Investigation	14
A11.8.4.4	Topographical Survey	14
A11.8.4.5	Archaeological Evaluation	14
A11.8.5	Stage 3: Mitigation Measures	15
A11.8.5.1	Introduction	15
A11.8.5.2	Review and Decision-Making	15
A11.8.5.3	Mitigation through preservation in situ	17
A11.8.5.4	Watching Brief	17
A11.8.5.5	Mitigation through preservation by record	18
A11.8.5.6	No mitigation	19
A11.8.6	Application of mitigation	20
A11.8.6.1	General	20
A11.8.6.2	Consultation	20
A11.8.6.3	Monitoring and review	20
A11.8.7	Stage 4: Post-Excavation	21
A11.8.7.1	Introduction	21
A11.8.7.2	Finds	21
A11.8.7.3	Environmental Sampling	22
A11.8.7.4	Post-Excavation Assessment	23
A11.8.7.5	Publication, Dissemination and Heritage Interpretation	24



A11.8.7.6	Archive Preparation and Deposition.....	24
A11.8.8	Long Term Management.....	25
A11.8.8.1	Archaeological Management Plan.....	25
A11.8.9	References.....	26
Appendix A: WSI Specification.....		28
A11.8.1	Introduction.....	4
A11.8.1.1	Project Background.....	4
A11.8.1.2	Purpose and scope of document.....	4
A11.8.1.3	Roles and Responsibilities.....	6
Relationship of the Outline AMS and Phase Specific Written Schemes of Investigation....		6
A11.8.2	Planning Background and Technical Guidance.....	8
A11.8.2.1	Legislative and Planning Background.....	8
A11.8.2.2	Relevant Guidance.....	8
A11.8.3	Stage 1: Pre-Consent Archaeological Investigation.....	9
A11.8.3.1	Previous Investigation and Assessment.....	9
A11.8.3.2	Results.....	14
A11.8.4	Stage 2: Post-consent Archaeological Investigation.....	15
A11.8.4.1	Introduction.....	15
A11.8.4.2	Geophysical Survey.....	15
A11.8.4.3	Geoarchaeological Investigation.....	15
A11.8.4.4	Topographical Survey.....	15
A11.8.4.5	Archaeological Evaluation.....	16
A11.8.5	Stage 3: Mitigation Measures.....	17
A11.8.5.1	Introduction.....	17
A11.8.5.2	Review and Decision-Making.....	17
A11.8.5.3	Mitigation through preservation in situ.....	18
A11.8.5.4	Watching Brief.....	19
A11.8.5.5	Mitigation through preservation by record.....	19
A11.8.5.6	No mitigation.....	21
A11.8.6	Application of mitigation.....	21
A11.8.6.1	General.....	21
A11.8.6.2	Consultation.....	21
A11.8.6.3	Monitoring and review.....	22
A11.8.7	Stage 4: Post-Excavation.....	22
A11.8.7.1	Introduction.....	22
A11.8.7.2	Finds.....	23

A11.8.7.3 Environmental Sampling	24
A11.8.7.4 Post-Excavation Assessment.....	25
A11.8.7.5 Publication, Dissemination and Heritage Interpretation.....	26
A11.8.7.6 Archive Preparation and Deposition.....	26
A11.8.8 Long Term Management.....	26
A11.8.8.1 Archaeological Management Plan.....	26
A11.8.9 References	28
Appendix A: WSI Specification.....	30

Figures

Figure A11.8.1a-d Stage 1 Geophysical Survey and Trenching

Figure A11.8.2a-d Information for Stage 2 Investigations

Tables

Table A11.8.1 Previous investigations

Table A11.8.2 Heritage Significance

Table A11.8.3 Heritage significance and appropriate mitigation

A11.8.1 INTRODUCTION

A11.8.1.1 PROJECT BACKGROUND

- 1 Wessex Archaeology has been commissioned by Elements Green Trent Ltd (hereafter 'the Client'), to prepare an Outline Archaeological Mitigation Strategy (Outline AMS). This document sets out the scope and mitigation principles for the planning and implementation of further archaeological investigations to be completed prior to the completion the Great North Road Solar and Biodiversity Park project (the Development).
- 2 This report forms a technical appendix to the Environmental Statement (ES) which will accompany the Development Consent Order (DCO) application for a proposed solar farm and associated infrastructure across an area of approximately 1,765 hectares (the 'Order Limits').
- 3 The Development will comprise the installation of a series of ground-mounted solar PV panels within the Order Limits. Associated works will include a Battery Energy Storage System (BESS), inverter housings, switch gear, access tracks, compounds, underground cabling, security measures and other ancillary equipment and landscaping (ES Chapter 5, Development Description [EN010162/APP/6.2.5]).

A11.8.1.2 PURPOSE AND SCOPE OF DOCUMENT

- 4 The Outline AMS is the principal document setting out the proposed post-consent approach to archaeology. The purpose of the Outline AMS is to set out the scope and methods proposed to mitigate the effects of the Development on below ground archaeological remains within the Order Limits, secure compliance with relevant legislation and national and local planning policy and agree on the approach with statutory consultees.
- 5 This document describes the principles to be applied in undertaking archaeological mitigation works, including strategies for protecting archaeological remains (where practicable and feasible) and investigation, recording and analysing archaeological remains that will be impacted by construction activities.
- 6 The baseline assessments and ES identified that archaeological remains exist within the Order Limits, and that there is potential for further remains to be present. This document identifies further assessment and mitigation measures to be undertaken to evaluate and/or mitigate potential effects of the Development on the archaeological resource.

A11.8.1.2.1 Aims and Objectives

- 7 The overarching aim of this Outline AMS details the archaeological mitigation proposed to reduce the impact of the Project on archaeological resources and record archaeological features. This will be achieved through an iterative programme of archaeological works, to include evaluation, safeguarding measures and/or excavation, watching brief, reporting prior to the commencement of construction of each relevant Phase of the Development. [The Permitted Preliminary Works would be undertaken with the supervision](#)

of the Archaeological Clerk of Works, with further details set out in Section A11.8.1.3.3.

- ~~78~~ The Outline AMS sets out the approach to engagement, field work and project management that will be carried out pre-construction, during construction and in the post-excavation analysis and publication stages.
- ~~89~~ Once the archaeological mitigation works have been completed a post excavation assessment providing the detail on the analysis to be carried out and research aims to identify and enhance knowledge following national and regional guidance will be provided to NCC by the Archaeological Contractor with a reasonable time period. This will enable to construction works to continue as programmed and provide assurance that the correct amount of post excavation analysis will be undertaken. It is considered that this will ensure any archaeological potential is fully mitigated and ensure the final design of the Project mitigates any residual risk.
- ~~910~~ This Outline AMS also summarises, where applicable, the extent of previous investigations and describes the proposed mitigation works and methods that will be implemented.
- ~~4011~~ The measures set out in this AMS are derived from the mitigation proposals presented in **ES Volume 2, Chapter 11: Cultural Heritage and Archaeology [EN010162/APP/6.2.11] [APP-054]**.
- ~~4412~~ The objectives of this Outline AMS are to:
- Secure the understanding of archaeological assets that may be affected by the development.
 - Where archaeological assets of high archaeological significance are encountered, and where possible and proportionate to the significance of the asset, the preservation of the asset in-situ will be considered, following discussion with NCC (as outlined within Section A11.8.1.3.4 of this Outline AMS);
 - Ensure preservation through recording and documentation of the archaeological resources uncovered during pre- and post-consent evaluation; the level of mitigation being dependent upon the significance of the archaeology and the extent of harm on the archaeological resource in question; and
 - Conduct a programme of post excavation assessment, analysis and publication on the results adhering to Management of Research Projects in the Historic Environment ('MORPHE') and Historic England guidance on projects. This would record and provide an advanced understanding of the significance of any heritage assets to be lost (wholly or in part) in a manner proportionate to their importance and the impact, and to make this evidence (and any archive generated) publicly accessible".
- ~~4213~~ This AMS sets out the scope, guiding principles and methods for the planning and implementation of an iterative programme of archaeological mitigation which is likely to comprise evaluation; excavation; watching brief (monitoring and record); post excavation assessment and analysis and publication. Each phase of the Development, ~~including enabling works~~, will require one or more standalone Written Schemes of Investigation (WSI)

following the grant of DCO, as secured by a Requirement in the Draft Development Consent Order.

Relationship of the Outline AMS and Phase Specific Written Schemes of Investigation

⁴³¹⁴ The Outline AMS sets out the approach that will be applied for each Phase of the Development, including enabling works. The Development will be delivered in Phases, and one or more Written Schemes of Investigation (WSI) will be prepared for each Phase of the Development. The Outline AMS sets out a staged approach to archaeological investigation within the Order Limits. The stages are set out below:

- Stage 1: Pre-determination: The archaeological investigations carried out during the pre-application stage;
- Stage 2: Post-consent archaeological investigations;
- Stage 3: Mitigation measures; and
- Stage 4: Post-excavation assessment and reporting.

⁴⁴¹⁵ The results of each stage of archaeological work have and will inform both design decisions (as appropriate) and the needs for, scope and extent of subsequent phases of work, whether that be further evaluation or sampling, or implementation of agreed mitigation.

⁴⁵¹⁶ The approach is iterative, and collaborative, with regular consultation and engagement with the Nottinghamshire County Council throughout the process.

⁴⁶¹⁷ The detail of subsequent proposed works referred to in this document will be set out in the WSI(s) prepared for each Phase of the Development. These WSIs will be prepared in substantial accordance with this Outline AMS.

A11.8.1.3 Roles and Responsibilities

⁴⁷¹⁸ The Archaeological Contractor will be appointed by the undertaker who will be made responsible for the delivery of the archaeological mitigation programme as set out in this Outline AMS. The undertaker will aim to appoint a single contractor, however given the size and as yet unconfirmed work programme, additional contractors may be required to assist in the delivery of this programme. This responsibility will include all on-site and off-site works, including preparation of the WSI, post-fieldwork reporting and publication.

A11.8.1.3.1 The Undertaker

⁴⁸¹⁹ The Undertaker is ultimately responsible for ensuring that the AMS is carried out as required and this is secured via a DCO Requirement.

A11.8.1.3.2 Principal Contractor

⁴⁹²⁰ The Principal Contractor (once appointed) is responsible for implementing the AMS and ensuring that any subcontractors undertaking work on the Site are made fully aware of the AMS and the archaeological requirements as set out therewithin, before work commences.

²⁰²¹ The principal contractor and/or their appointed representatives will adhere to the AMS and works agreed to in Stage 2 and Stage 3 WSI/s. They will seek curatorial advice as appropriate and administer interactions with the

Archaeological Curator. Should archaeological deposits be discovered, the Archaeological Curator will be contacted.

2422 In advance of the Principal Contractor being appointed, the Client would undertake this role.

A11.8.1.3.3 Project Archaeologist (Archaeological Clerk of Works)

2223 A Project Archaeologist (ACoW) will be appointed by the Principal Contractor (or client if a Principal Contractor has not been appointed) who will be responsible for monitoring the work undertaken by the Archaeological Contractor to ensure compliance with the AMS. The Project Archaeologist will also organise and attend regular site meetings with the Archaeological Curator, to keep them fully informed of progress and significant discoveries.

2324 The Project Archaeologist in collaboration with the Archaeological Curator will also monitor and sign off any archaeological works prior to those areas being released for construction.

2425 The Project Archaeologist will in collaboration with the Archaeological Curator ensure that reporting and post-excavation assessment and analysis are carried out in line with the provision of the AMS and relevant WSIs.

26 The ACoW should be embedded in the Client's delivery team in order to ensure changes in the construction programme are appropriately responded to (see ES Volume 4, Appendix A5.3: Outline Construction Environmental Management Plan (CEMP) [EN010162/APP/6.4.5.3D]).

27 The ACoW would oversee the Permitted Preliminary Works and would oversee the works to ensure that the works are undertaken in accordance with the mitigation measures set out within this oAMS. If deemed necessary, the ACoW would prepare a PPW WSI, and would be shared with the County Archaeologist for their approval.

A11.8.1.3.4 Archaeological Curator

2528 The Archaeological Curator will have ultimate responsibility for confirming that the measures set out in the Outline AMS and approved WSIs relating to archaeology are complied with.

2629 The Archaeological Curator will review archaeological works including, but not limited to, completion of phases of fieldwork, reporting and agreeing post-excavation assessment and reporting. While considered unlikely for this Development, Historic England may also be involved in the above or provide advice to the planning authority's archaeological advisor, if appropriate.

2730 No works should commence until approval of a WSI for each phase or aspect of archaeological investigation has been approved by the County Council.

2831 During any fieldwork, the Archaeological Curator will be afforded access to the site for monitoring visits as required. After construction has been completed, the final archaeological reports or publication(s) for this project will be submitted to the Archaeological Curator.

A11.8.1.3.5 Archaeological Contractor(s)

- 2932 The Archaeological Contractor/s will be responsible for delivering the archaeological mitigation programme, as set out in this AMS. Their responsibilities will include all on-site and off-site works, including preparation of the WSI/s, post-fieldwork reporting, and publication of the works they have completed.
- 3033 The Project/Fieldwork Manager of the Archaeological Contractor/s will be responsible for ensuring that the archaeological works assigned to them are delivered in accordance with the parameters outlined in the WSI/s.
- 3434 The Archaeological Contractor will be appointed by the Undertaker.

A11.8.2 PLANNING BACKGROUND AND TECHNICAL GUIDANCE

A11.8.2.1 LEGISLATIVE AND PLANNING BACKGROUND

- 3235 There is national legislation and guidance relating to the protection of, and proposed development on or near, important archaeological sites or historical buildings within planning regulations as defined under the provisions of the Town and Country Planning Act 1990. In addition, local authorities are responsible for the protection of the historic environment within the planning system.
- 3336 The Planning Background is provided within the ES Chapter (11: Cultural Heritage and Archaeology [EN010162/APP/6.2.11] and the Archaeological Desk-Based Assessment (ES Technical Appendix A11.1 [EN010162/APP/6.4.11.1]).

A11.8.2.2 RELEVANT GUIDANCE

- 3437 The following general guidance will be used to guide the work undertaken:
- ALGAO 2015. Advice Note for Post-Excavation Assessment;
 - Brown, D. H. 2011. Archaeological Archives: a guide to best practice in creation, compilation, transfer and curation (revised edition);
 - Chartered Institute for Archaeologists (CIfA) 2014a (revised 2022) Code of Conduct;
 - Chartered Institute for Archaeologists (CIfA) 2014b (revised 2023) Standard and Universal Guidance for Archaeological Field Evaluation;
 - Chartered Institute for Archaeologists (CIfA) 2014d (revised 2023) Standard and Universal Guidance for Archaeological Excavation;
 - Chartered Institute for Archaeologists (CIfA) 2014e (revised 2023) Standard and Universal Guidance for Archaeological Watching Brief;
 - Chartered Institute for Archaeologists (CIfA) 2014g (revised 2020) Standard and Guidance for the Creation, Compilation, Transfer and Deposition of Archaeological Archives;
 - Chartered Institute for Archaeologists (CIfA) 2014h (revised 2020) Standard and Guidance for the collection, documentation, conservation and research of archaeological materials;
 - Chartered Institute for Archaeologists (CIfA) 2014i (revised 2020) Standard and Guidance for archaeological geophysical survey;

- Department for Levelling Up, Housing and Communities, National Planning Practice Guidance: Historic Environment, 2014 (last updated 2019);
- Campbell, G, Moffett, L and O’Meara, D 2025 'Environmental Archaeology. A Guide to the Theory and Practice of Methods, from Sampling and Recovery to Post-excavation (third edition)'. Portsmouth: Historic England;
- English Heritage 2008. Conservation Principles, Policies and Guidance: For the sustainable management of the historic environment;
- Historic England, 2004 (revised 2015) Geoarchaeology: Using Earth sciences to Understand the Archaeological Record;
- Historic England, 2015. Geoarchaeology: Using Earth Sciences to Understand the Archaeological Record;
- Historic England, 2015b. Management of Research Projects in the Historic Environment: The MoRPHE Project Managers’ Guide;
- Historic England, 2016. Preserving Archaeological Remains: Decision-taking for Sites under Development;
- Historic England, 2016b. Understanding Historic Buildings: A guide to good recording Practice.
- Historic England 2025. Environmental Archaeology. A Guide to Theory and Practice f Methods, from Sampling and Recovery to Post-excavation (3rd edition); and
- MOLA 2004. Mitigation of Construction Impact on Archaeological Remains. English Heritage.

A11.8.3 STAGE 1: PRE-CONSENT ARCHAEOLOGICAL INVESTIGATION

A11.8.3.1 PREVIOUS INVESTIGATION AND ASSESSMENT

³⁵³⁸ The Order Limits has been subject to a series of geophysical surveys and archaeological evaluations (illustrated on **Figures A11.8.1a-d**). Investigations undertaken as part of Stage 1 are listed in **Table 1** and summarised below.

Table A11.8.1 Investigations Undertaken to date

Report Type	Title	Technical Appendix
Archaeological Evaluation 2022	<i>Land south of Staythorpe Road Staythorpe, Newark, Nottinghamshire.</i> Unpublished Client Report	N/A – undertaken for a separate application
Geophysical Surveys ERM 2023	<i>Detailed Gradiometer Survey Report. Land To The West of A1, North of Staythorpe, Nottinghamshire.</i> Unpublished report	ES Volume 4, Appendix A11.4: Phase 1 Geophysics Results [EN010162/APP /6.4.11.4A] [REP2-060] [REP2-061] [REP2-062] [REP2-063]
Geophysical Surveys ERM 2023	<i>Detailed Gradiometer Survey Report. Land To The West of A1, North of Staythorpe,</i>	

Report Type	Title	Technical Appendix
	<i>Nottinghamshire (Brown Land). Unpublished report</i>	
Geophysical Surveys ERM 2023	<i>Detailed Gradiometer Survey Report. Land To The West of A1, North of Staythorpe, Nottinghamshire (Burnett Land). Unpublished report</i>	
Geophysical Surveys ERM 2023	<i>Detailed Gradiometer Survey Report. Land To The West of A1, North of Staythorpe, Nottinghamshire (Carlton Land). Unpublished report</i>	
Geophysical Surveys ERM 2023	<i>Detailed Gradiometer Survey Report. Land To The West of A1, North of Staythorpe, Nottinghamshire (Chase Land). Unpublished report</i>	
Geophysical Surveys ERM 2023	<i>Detailed Gradiometer Survey Report. Land To The West of A1, North of Staythorpe, Nottinghamshire (Dakin Land). Unpublished report</i>	
Geophysical Surveys ERM 2023	<i>Detailed Gradiometer Survey Report. Land To The West of A1, North of Staythorpe, Nottinghamshire (Germany Land). Unpublished report</i>	
Geophysical Surveys ERM 2023	<i>Detailed Gradiometer Survey Report. Land To The West of A1, North of Staythorpe, Nottinghamshire (Garage Farm Land). Unpublished report</i>	
Geophysical Surveys ERM 2023	<i>Detailed Gradiometer Survey Report. Land To The West of A1, North of Staythorpe, Nottinghamshire (Garage Hewson Land). Unpublished report</i>	
Geophysical Surveys ERM 2023	<i>Detailed Gradiometer Survey Report. Land To The West of A1, North of Staythorpe, Nottinghamshire (Jackson Land). Unpublished report</i>	
Geophysical Surveys	<i>Detailed Gradiometer Survey Report. Land To The West of A1,</i>	

Report Type	Title	Technical Appendix
ERM 2023	<i>North of Staythorpe, Nottinghamshire (Stainiforth Land).</i> Unpublished report	
Geophysical Surveys ERM 2023	<i>Detailed Gradiometer Survey Report. Land To The West of A1, North of Staythorpe, Nottinghamshire (Ward Land).</i> Unpublished report	
Geophysical Surveys 2024	<i>Land To The West of A1, North of Staythorpe, Nottinghamshire. (East Of Eakring, Maplebeck Estate, South Of Ollerton Road).</i> Unpublished Report	ES Volume 4, Appendix A11.4: Phase 1 Geophysics Results [EN010162/APP /6.4.11.4A] [REP2-060] [REP2-061] [REP2-062] [REP2-063]
Geophysical Surveys Magnitude Surveys 2024	<i>Detailed Gradiometer Survey Report Land To The West Of A1, North Of Staythorpe, Nottinghamshire.</i> Unpublished Report	ES Volume 4, Appendix A11.4: Phase 1 Geophysics Results [EN010162/APP /6.4.11.4A] [REP2-060] [REP2-061] [REP2-062] [REP2-063]
Geophysical Survey (Phase 2) Magnitude Surveys 2024	<i>Interim Geophysical Survey Report Great North Road Solar Farm, Staythorpe</i>	ES Volume 4, Appendix A11.5: Phase 2 Geophysics Results [EN010162/APP /6.4.11.5] [APP-258] [APP-259] [APP-260] [APP-261] [APP-262]
Archaeological Desk-Based Assessment 2024	<i>GNR Solar Farm Newark, Nottinghamshire: Archaeological Desk-Based Assessment.</i> Unpublished Report	ES Volume 4, Appendix A11.1: Archaeological Desk-Based Assessment [EN010162/APP/6.4.11.1] [APP-251] [APP-252] [APP-253] [APP-254]
Archaeological Evaluation (Phase 1) 2024	<i>Great North Road Solar Park. Archaeological Evaluation.</i> Unpublished Client Report	ES Volume 4, Appendix A11.6: Phase 1 Trial Trenching Results [EN 0101/APP/6.4.11.6] [APP-263] [APP-264] [APP-265]

Report Type	Title	Technical Appendix
Archaeological Evaluation (Phase 2) 2025	<i>GNR Solar Farm Phase 2. Interim Report for Archaeological Evaluation</i> (forthcoming) Unpublished Client Report	ES Volume 4, Appendix A11.7: Phase 2 Trial Trenching Interim Results [EN0101/APP/6.4.11.7] [APP-266] [APP-267] [APP-268]
Geoarchaeological Desk-based Assessment & Landscape Characterisation 2025	GNR Solar and Biodiversity Park, Nottinghamshire. Geoarchaeological Desk-based Assessment and Landscape Characterisation	ES Volume 4, Appendix A11.3: Geoarchaeological Desk-Based Assessment [EN0101/APP/6.4.11.3] [APP-256]

A11.8.3.1.1 Archaeological Evaluation (Wessex Archaeology 2022)

³⁶³⁹ Wessex Archaeology was commissioned by Arcus Consultancy Services Ltd to undertake an archaeological evaluation of land located to the south of Staythorpe Road, Nottinghamshire, within the southern part of the Order Limits.

³⁷⁴⁰ The earliest feature uncovered was a north-east–south-west aligned Late Neolithic ditch, which was noted in three trenches in the central south-east part of the Order Limits. Sherds of Grooved Ware and Beaker pottery were recovered from one of the ditch fills, as well as worked flint typical of Late Mesolithic/Early Neolithic forms. Evidence of post-medieval/modern boundary ditches was also recorded in the north and western parts of the Order Limits and correspond well with boundaries shown on the 1884 Ordnance Survey (OS) map.

³⁸⁴¹ Additionally, a palaeochannel was identified at the northern edge of the Order Limits that was potentially a continuation of a river channel, from which a human thigh bone carbon dated to the Mesolithic period was recovered from, 1.3 km to the east of Order Limits. The bulk sediment samples from the upper fills of the palaeochannel contained plant remains indicative of medieval/post-medieval settlement.

A11.8.3.1.2 Geophysical Surveys (Wessex Archaeology, AOC and Magnitude Surveys) (TA A11.4 [EN010162/APP/6.4.11.4])

³⁹⁴² A series of geophysical surveys were commissioned by Environmental Resources Management (ERM) (formerly Arcus Consultancy Services Ltd) with the aim of establishing the presence, or otherwise, and nature of detectable archaeological features to assess the archaeological potential of land parcels and their suitability for development. The geophysical surveys were conducted by various contractors in 2023 and 2024.

⁴⁰⁴³ The results of the surveys highlighted areas of geophysical anomalies within the Order Limits. Concentrations of geophysical anomalies were noted in the

following locations; south-west of Cromwell, west of Carlton-on-Trent, between Bathley and North Muskham, south of Little Carlton, and South Muskham. These areas lie close to the River Trent and the Great North Road and would have been favourable for occupation and settlement.

⁴⁴⁴⁴ The results of the surveys were used to inform the design of the Development. Where geophysical survey has been undertaken and areas of significant archaeological concentration have been identified, these areas have been taken into consideration within design and excluded from the Development on the basis that archaeological remains in these areas will be preserved in situ. Therefore, these areas were excluded from subsequent archaeological evaluations. Should this change through the evolution of the design, these areas could be evaluated as part of a subsequent phase of trial trenching.

A11.8.3.1.3 Geophysical Surveys (Magnitude Surveys 2024) (TA A11.5 [EN010162/APP/6.4.11.5])

⁴²⁴⁵ A further phase of fluxgate gradiometer survey was successfully completed on a 515 ha area of land (out of a planned total of c. 635 ha) within the Order Limits. The remainder of the area (120 ha) was unable to be surveyed due to unsuitable ground conditions, overgrown vegetation and lack of access. A number of possible and probable archaeological anomalies were identified, within three areas of archaeological activity. The majority of these areas appear to form isolated Iron Age/Romano-British enclosures in close proximity to the River Trent, Kersall and North Muskham. Anomalies relating to the historical and modern agricultural use of the landscape are evident across this survey area in the form of ridge and furrow cultivation regimes, modern ploughing trends, mapped and unmapped former field boundaries and drainage systems.

A11.8.3.1.4 Phase 1 Trial Trenching (York Archaeological Trust 2024) (TA A11.6 [EN010162/APP/6.4.11.6])

⁴³⁴⁶ York Archaeological Trust (YAT) were commissioned to undertake a programme of archaeological evaluation (trial trenching) on several land parcels located to the north-west of Newark-on-Trent, across an area of c. 307 ha, during May-June 2024. Through the geophysical survey, areas of archaeological interest that could not be avoided by design were identified. The Phase 1 trench layout focussed upon these remaining areas, to assess and characterise potential archaeological remains which may be subject to physical effects as part of the Development.

⁴⁴⁴⁷ Of a planned 444 trenches, 231 were excavated as part of this phase. Of these 125 trenches were found to contain features or deposits of archaeological interest, and a further 28 trenches produced artefactual material.

⁴⁵⁴⁸ The evaluation area at Maplebeck consisted of 89 trenches of which 37 contained archaeological features. The features broadly comprised pits, gullies, and enclosure ditches, dating to the later prehistoric and Romano-British periods. Later ridge and furrow systems and former field boundaries identifiable on historic mapping were also recorded.

- 4649 The area at Castle Hill consisted of the excavation of 12 trenches. A probable Romano-British ditch was recorded, suggested to be a boundary ditch and a post-medieval pond were recorded as well as former field boundary ditches.
- 4750 At Cromwell archaeological features consisted of ditches, pits and ridge and furrow field systems as well as former field boundaries. Many of the features did not contain any dating evidence but were suspected to date from the prehistoric to Romano-British period and medieval to modern periods. Undated and naturally formed features such as evidence for palaeochannels were also identified.
- 4851 At Cromwell north, archaeological features included ditches, pits and postholes of medieval and post-medieval date, as well as associated agricultural activity such as ridge and furrow and former field boundaries.

A11.8.3.1.5 Phase 2 Trial Trenching (York Archaeological Trust 2025) (TA11.7 [EN010162/APP/6.4.11.7])

- 4952 The second phase of archaeological evaluation was undertaken between January and March 2025. An interim report on the results has been issued. The trench layout for this phase focussed on areas with little to no anomalies identified by the geophysical survey, in order to test the accuracy of the survey results, and to distinguish any as-yet unknown archaeological features. The interim report details a small number of truncated ditches of likely Romano-British date at Kelham West, with all other trenches being blank (with the exception of post-medieval or later field boundaries) generally confirming the geophysical survey results.

A11.8.3.1.6 Geoarchaeological Desk-based Assessment & Landscape Characterisation (ES TA A11.3 [EN010162/APP/6.4.11.3])

- 5053 A Geoarchaeological Landscape Characterisation based on British Geological Society archive boreholes, mapping of superficial deposits and analysis of LiDAR data was used to define nine preliminary Geoarchaeological Character Zones within the Order Limits, based on variations in the geological characteristics of the deposits present. This identified five areas within the Order Limit where Quaternary deposits may be present, which could contain archaeological evidence and/or deposits with palaeo-environmental interest.

A11.8.3.2 RESULTS

- 5154 The results of the Stage 1 archaeological investigations have allowed for embedded development design mitigation to be included within the design of the Development. This comprises the careful routing of the cable route and siting of the solar array areas, compounds, substations and BESS to avoid or minimise impacts to key areas of archaeological sensitivity, based upon the results of the investigations completed to date. Areas where archaeological remains have been avoided as part of the design will be preserved in situ.

A11.8.4 STAGE 2: POST-CONSENT ARCHAEOLOGICAL INVESTIGATION

A11.8.4.1 INTRODUCTION

⁵²⁵⁵ The following section sets out the approach to the post-consent investigation.

⁵³⁵⁶ Areas within the Order Limit that would be subject to Stage 2 archaeological investigation are illustrated on **Figures A11.8.2a-d**.

A11.8.4.2 GEOPHYSICAL SURVEY

⁵⁴⁵⁷ Geophysical survey is required for all areas of the Order Limits that could not be surveyed at Stage 1.

⁵⁵⁵⁸ The geophysical surveys will then help inform the approach taken to any further trial trench evaluation needed for each part of the Order limits. This will ensure that the results of the survey are taken into account ahead of trenching.

⁵⁶⁵⁹ The geophysical survey will be carried out in accordance with the approved WSI for each relevant Phase.

A11.8.4.3 GEOARCHAEOLOGICAL INVESTIGATION

⁵⁷⁶⁰ Informed by the Stage 1 Desk-based Assessment, Stage 2 evaluation of selected areas of high potential and in consideration of the anticipated development impacts (i.e. that the deposits are of depth they will be impacted by construction activities, for example in Work Areas 4, Intermediate Substations, and 5a, BESS), geoarchaeological may be required at Stage 2. Techniques for geoarchaeological sampling could include test pits for controlled recovery of artefacts and/or palaeo-environmental and dating samples. Another alternative method could be targeted borehole sampling. The type of geoarchaeological sampling technique and analysis are usually subject to a staged program of investigation, with detailed requirements determined at each stage.

⁵⁸⁶¹ The scope of any further geoarchaeological works will be set out within the WSI for each relevant Phase and will conform to Historic England Guidance, 'Geoarchaeology: Using Earth Sciences to Understand the Archaeological Record' (2015b) and 'Curating the Palaeolithic' (2023).

A11.8.4.4 TOPOGRAPHICAL SURVEY

⁵⁹⁶² The Archaeological Desk-based Assessment (**ES Volume 4, Appendix A11.1: Archaeological Desk-Based Assessment [EN010162/APP/6.4.11.1] [APP-251] [APP-252] [APP-253] [APP-254]**) identified limited extant remains at RAF Ossington. Subsequent research has highlighted the possibility that more extensive remains may be present in and adjacent to the Order Limits at this location.

⁶⁰⁶³ A topographical survey will be conducted to confirm the presence, location and condition of any structures associated with the airbase.

A11.8.4.5 ARCHAEOLOGICAL EVALUATION

- 6464 The general aim of the evaluation is to 'ground-truth' the geophysical survey results and other areas of high potential to confirm the presence or absence of archaeologically significant remains, allowing the mitigation measures set out to be applied appropriately. The evaluation will be located within parts of the Order Limits that have not yet been subject to intrusive investigation (with the exception of areas of preservation in situ). This will draw on the results of the Stage 1 and Stage 2 work undertaken.
- 6265 If archaeological remains are present, field evaluation defines their character, extent, quality and preservation, reports on them and enables an assessment of their significance in a local, regional, national or international context as appropriate' (ClfA 2023a). Archaeological excavation involves a programme of intrusive fieldwork with defined research objectives which examines, records and interprets archaeological deposits, features and structures and, as appropriate, retrieves artefacts, ecofacts and other remains within a specified area or site on land, in an inter-tidal zone or under water (2023b17).
- 6366 The number and location of any further trial trenches will be informed by the Stage1 and initial Stage 2 work and will be set out in the relevant WSI for a Phase of the Development. The number of trial trenches in any given Phase will respond to the potential for damage to archaeology. Trial trenches will be focused in areas where archaeology is more significant or less certain (based on desk-based data and geophysical survey) and in areas of higher ground disturbance, such as Work Areas 4, 5a, 5b (substations/BESS) and at construction compounds and access tracks.
- 6467 In the other Work Areas, trenching densities would be much lower in response to lower risk arising from lesser archaeological significance/greater certainty and lesser proposed ground disturbance.
- 6568 The location of any trial trenches (generally between 25 m and 30 m in length, and up to 1.8 m wide) will be dependent on ecological, utilities and ground condition constraints.
- 6669 Following the backfilling of the trenches, any records (written, drawn, photographic, digital etc, as well as environmental samples and artefacts) generated during the evaluation will be subject to a programme of assessment, followed by appropriate analysis and reporting.
- 6770 An archive suitable for long-term storage will be prepared and placed within an appropriate repository. The results will be made available to the public and be submitted on the Online Access to the OASIS and ADS database. A final report of the evaluation will be sent to Nottinghamshire County Council and Historic England.
- 6871 The archaeological evaluation will be carried out in accordance with the approved WSI/s.

A11.8.5 STAGE 3: MITIGATION MEASURES

A11.8.5.1 INTRODUCTION

⁶⁹⁷² Once the Stage 2 works have been completed, the extent of the archaeological resource across the Order Limits will be reviewed. Implementing the principles set out within this section, mitigation measures which remove any potential further impact (preservation *in situ*), where practicable, will always be preferred. Where this is not possible, mitigating the loss of the archaeological resource through preservation by record will be proposed. However, there may be areas where no archaeology is present or the remains of which warrant no further investigation.

A11.8.5.2 REVIEW AND DECISION-MAKING

⁷⁰⁷³ On the completion of the Stage 2 investigations, the results will be considered together with those from the Stage 1 archaeological work to establish an overall picture of the archaeological resources within the Order Limits. Significance scores in line with the table below will be assigned to any remains/groups of features identified considering both regional and national research frameworks.

Table A11.8.2 Heritage Significance

Heritage Significance	Description/ Reason
Very High	Assets that can contribute significantly to acknowledged international research agendas
High	Scheduled monuments and undesignated assets of Schedulable quality and importance Archaeological assets that can contribute significantly to acknowledged national research objectives
Medium	Archaeological assets of regional importance, contribution to regional research objectives.
Low	Archaeological assets of limited value, but with potential to contribute to local research objectives
Negligible	Sites/features that are so badly damaged that too little now remains to justify their inclusion at a higher grade and with no surviving historic content.
Unknown	The importance of the resource cannot be ascertained due to limited existing information; therefore, the value of the resource is classified as ranging from high to low sensitivity.

⁷⁴⁷⁴ Following this review, consultation will be undertaken with the Archaeological Curator with a view to agreeing levels of heritage significance and appropriate measures required. The results of the review will be incorporated into the WSI for each relevant Phase of the Development.

⁷²⁷⁵ Where archaeological remains of “high” or “very high” significance are identified, preservation *in situ* will be the preferred option. Where remains of

less significance (Medium, Low and Negligible) are identified, archaeological measures will be presented, ranging from implementing a programme of archaeological monitoring and recording (Watching Brief), additional or specific sampling strategies and/or other site-specific investigations, up to and including detailed area archaeological investigation as appropriate.

These are presented in **Table A11.8.3 below**.

Table A11.8.3 Heritage significance and appropriate mitigation

Heritage Significance	Appropriate Mitigation
Very High	<ul style="list-style-type: none"> • Preservation in situ where feasible and practicable • Implementation of appropriate program of archaeological works to provide mitigation through preservation by record.
High	<ul style="list-style-type: none"> • Preservation in situ where feasible and practicable • Implementation of appropriate program of archaeological works to provide mitigation through preservation by record.
Medium	<ul style="list-style-type: none"> • Implementation of appropriate program of archaeological works to provide mitigation through preservation by record.
Low	<ul style="list-style-type: none"> • Implementation of appropriate program of archaeological works to provide mitigation through preservation by record.
Negligible	<ul style="list-style-type: none"> • No further work.

A11.8.5.3 MITIGATION THROUGH PRESERVATION IN SITU

⁷³⁷⁶ The implementation of preservation *in situ* will be completed through strategies and construction techniques to avoid physical impact on the archaeology (beyond those that may have been caused as part of the initial evaluation works). This will be achieved by removing areas from development or designating them as greenspaces. Any specific measures or areas will be identified and presented in appropriate documentation to the Archaeological Curator.

⁷⁴⁷⁷ Decisions on arrangements to secure preservation *in situ* will have regard to the principles outlined in the *Preserving Archaeological Remains* documentation to ensure that any strategy is right for the site and archaeology in question¹.

⁷⁵⁷⁸ Some areas of preservation in situ were established during Stage 1 (**Figures A11.8.2a-d**).

¹ <https://historicengland.org.uk/images-books/publications/preserving-archaeological-remains/>

A11.8.5.4 WATCHING BRIEF

- ~~7679~~ Watching briefs represent a continuous procedure aimed at the proactive identification, examination, and documentation of archaeological remnants during the construction phase of the Development. These briefs are executed concurrently with groundwork operations, during the implementation of construction works requiring excavation of foundation trenches and utility trenching.
- ~~7780~~ Typically, this method is used for locations that have displayed certain archaeological potential based on prior examinations, background research, and other factors, yet without sufficient justification for extensive procedures like strip, map, and sample excavations, or detailed excavations.
- ~~7881~~ Watching briefs would generally entail the presence of a single certified archaeologist who monitors all intrusive groundwork activities until either the work is finished or the possibility of uncovering archaeological remains has been thoroughly explored within the agreed remit of a WSI.
- ~~7982~~ If an archaeological discovery is made during the process, it would necessitate discussions with both the undertaker and the Archaeological advisor. Adequate time and resources would need to be allocated to facilitate the appropriate excavation and documentation of this discovery before construction activities can resume.
- ~~8083~~ Subsequent to discussions with the Archaeological Curator, the watching brief would cease in cases where no archaeological features and /or deposits have been identified through monitoring and the area would be handed over directly to the construction teams responsible for the development.
- ~~8184~~ ~~The Outline CEMP in~~ In the event that specific recording and/or preservation in situ works are required, details will be provided in a Written Scheme of Investigation for agreement, in accordance with the processes outlined in the AMS. Any finds/sites that are identified under the Protocol will be incorporated into the Stage 3 Mitigation programme (depending at what stage the in the construction programme the find is made) and the Stage 4 Post-excavation and publication programme set out in the approved WSI for each relevant phase.
- ~~8285~~ The Outline CEMP sets out an **Unexpected Discoveries Protocol** in the event that archaeological remains are subsequently encountered. The Protocol will set out how unexpected discoveries will be treated by the Contractors, and then agreed with the Archaeological Curators(s).

A11.8.5.5 MITIGATION THROUGH PRESERVATION BY RECORD

- ~~8386~~ Where preservation by record is the practicable or feasible approach for archaeology, the exact scope and extent of any works will be determined. Methodologies that may be implemented following the results of the post-consent evaluation are presented below. The ordering of each method does not imply that there is a preference in technique.

A11.8.5.5.1 Additional Non-Intrusive Surveys

- 8487 It may be possible to implement alternative forms of non-intrusive surveys (e.g. metal detecting, building recording and fieldwalking/surface artefact collection), in areas of the Order Limit with specific archaeological potential and appropriate surveying conditions. Areas that have already been subject to trenching as part of Stage 1 would be excluded from metal detecting and fieldwalking survey techniques.
- 8588 It would be necessary to complete metal detecting and fieldwalking survey in advance of evaluations, or any other form of intrusive archaeological investigation. This includes Stage 2 trial trenching.
- 8689 Fieldwalking is a non-intrusive form of investigation that can highlight areas of archaeological activity. Within the Order Limit, this could be particularly appropriate for locating Mesolithic artefacts scatters beyond the river flood plain, which would not be picked up through geophysical survey or evaluation trenches.
- 8790 Areas under trackways and in pastoral use would be excluded from fieldwalking due to unsuitable conditions, whilst arable areas would only be accessible in autumn and winter months, to avoid tall crops.
- 8891 Where buildings are present within the Order Limits (for example at the former RAF Ossington) building recording may be a suitable mitigation response. The level of recording will be agreed with the Curator and will reflect the advice in Historic England 2016b.

A11.8.5.5.2 Geoarchaeological Investigation

- 8992 Depending on the results of any Stage 2 geoarchaeological evaluation further mitigation works may be required. The scope of any further geoarchaeological works will be set out within a specified WSI, conforming to Historic England Guidance, 'Geoarchaeology: Using Earth Sciences to Understand the Archaeological Record' (2015b) and 'Curating the Palaeolithic' (2023).

A11.8.5.5.3 Targeted Strip, Map and Record or Archaeological Excavation

- 9093 Targeted strip, map and record or detailed archaeological excavation will be undertaken on archaeological remains of medium heritage significance or where preservation in situ is not a viable mitigation method for remains of the Very High/High levels of heritage significance (national and international), as appropriate.
- 9194 The scope of the archaeological works will be set out within a WSI.
- 9295 Areas selected for targeted strip, map, and record or detailed archaeological excavation may be temporarily fenced to demarcate the excavation area to ensure no physical impacts are caused prior to the programme's implementation.
- 9396 Open area excavation may be used for detailed excavation of areas with significant, complex and /or dense archaeological remains. Whilst these areas should ideally be defined and excavated prior to construction, where

this is not possible, agreed areas will be fenced off whilst archaeological work is completed.

A11.8.5.5.4 Archaeological Monitoring and Recording

⁹⁴⁹⁷ Dependant on the results of the Stage 2 investigations, a programme of Archaeological Monitoring and Recording (Watching Brief) may be required on areas with archaeological remains which are of “Low” heritage significance as set out in **Table A11.8.3**. Note that this is part of the watching brief referred to in section a11,8,5,4 above. The terms “watching brief “ and “Archaeological Monitoring and Recording” are synonymous for purposes of this document,

⁹⁵⁹⁸ However, should significant archaeological remains be identified within an area of archaeological monitoring, then specific appropriate intervention may be required, such as the implementation of a targeted strip, map and recording exercise or other detailed excavation programme.

⁹⁶⁹⁹ The scope of the archaeological works will be set out within a location or activity specific WSI.

A11.8.5.6 NO MITIGATION

⁹⁷¹⁰⁰ In areas where there have been no known heritage assets noted within the Desk-based Assessment, no anomalies identified during the geophysical survey and/or no features uncovered during the Stage 1 or 2 evaluations, no mitigation may be proposed. These areas will be formally identified at the conclusion of Stage 2, noting this may be staged depending on the programme.

A11.8.6 APPLICATION OF MITIGATION

A11.8.6.1 General

⁹⁸¹⁰¹ Based on the information to date, there is no indication that any archaeological remains within the Order Limits would be of the highest significance. Archaeological remains dating from the prehistoric to 18th century have been identified within the Order Limits, ranging from negligible to high heritage significance (high value assets are only found in the vicinity of Cromwell where ecological mitigation works are scheduled as part of Work Area 3.

A11.8.6.2 CONSULTATION

⁹⁹¹⁰² Consultation with the Archaeological Curator will be undertaken throughout the post-consent process, with specific consultation points at the following milestones:

- Following consent to proceed, the Written Schemes of Investigation (WSI) for the Stage 2 investigations, will be submitted to the discharging authority (Nottinghamshire County Council) for approval;
- Upon completion of the Stage 2 investigations, discussions will be held to determine the significance of findings and agree on appropriate mitigation measures. These may include preservation in situ, further

phases of fieldwork, or confirmation of areas where no further investigation is required;

- Establishing methodologies to achieve preservation in situ;
- During the preparation of the Stage 3 Mitigation Measures WSI(s), which will also be submitted to the discharging authority for approval;
- During the implementation of mitigation measures through preservation by record;
- Agreeing on the sign-off of areas to allow construction activities to proceed;
- Following the completion of all on-site fieldwork, reviewing the post-excavation assessment and any necessary updates to the project design; and
- Upon conclusion of the post-excavation assessment phase, finalising an updated project design that sets out the required post-excavation analysis, publication, and archiving requirements.

~~400~~103 Consultation will also be undertaken should there be a requirement to deviate from this strategy.

A11.8.6.3 Monitoring and review

~~404~~104 Agreed fieldwork for all phases will be monitored by the Project Archaeologist on a regular basis. The Archaeological Curator will be invited to attend on-site monitoring, and such visits will be facilitated by the Archaeological Contractor.

~~402~~105 It is envisaged that these monitoring visits will form part of a process by which formal sign-off on areas of evaluation and specific mitigation works can be discussed and agreed. A specific process for recording discussions and agreements, as well as identifying signed-off areas, will be developed and set out in the relevant detailed WSIs.

~~403~~106 Where regular monitoring cannot be undertaken, or where archaeologically “blank” trenches are excavated, an appropriate photographic record will be submitted, before backfilling to expedite the work.

~~404~~107 Reporting will be undertaken at intervals agreed with the Archaeological Curator, with content and format subject to approval, depending on the anticipated programme.

~~405~~108 Results will be reviewed regularly with the Archaeological Curator to assess the suitability of proposed techniques and to evaluate whether the density and locations of trenches (Stage 2) can be reduced or amended as necessary.

~~406~~109 Where specific measures to achieve preservation *in situ* have been agreed and implemented, an appropriate record will be submitted to the Archaeological Curator upon completion.

A11.8.7 STAGE 4: POST-EXCAVATION

A11.8.7.1 Introduction

~~407~~110 After the on-site fieldwork has taken place, post-excavation assessment is required. Set out below is a general process for the post-excavation assessment. Due to the varied nature of the archaeological fieldwork

outlined above, the below will need to be tailored to each investigation type. This would be set out in the individual WSIs for separate pieces of work.

A11.8.7.2 FINDS

A11.8.7.2.1 General

⁴⁰⁸~~111~~ All archaeological finds from excavated contexts will be retained, although those from features of modern date (19th century or later) may be recorded on site and not retained, depending on the research objectives set out in the WSI. Where appropriate soil samples may be taken and sieved to aid in finds recovery. Any finds requiring conservation or specific storage conditions will be dealt with immediately in line with First Aid for Finds (Watkinson and Neal 1998).

A11.8.7.2.2 Human Remains

⁴⁰⁹~~112~~ In the event of the discovery of any human remains (articulated or disarticulated, cremated or unburnt), all excavation of the deposit(s) will cease pending the Principal Contractor obtaining a Ministry of Justice Licence (this includes cases where remains are to be left in situ).

⁴⁴⁰~~113~~ Should human remains require removal, all excavation and post-excavation will be in accordance with the Principal Contractors protocols and current guidance documents (McKinley 2013) and ClfA Technical Paper 13 Excavation and post-excavation treatment of cremated and inhumed remains. Appropriate specialist guidance/site visits will be undertaken if required.

⁴⁴⁴~~114~~ The final deposition of human remains subsequent to the appropriate level of osteological analysis and other specialist sampling examinations will follow the requirements set out in the Ministry of Justice licence.

A11.8.7.2.3 Treasure

⁴⁴²~~115~~ The Principal Contractor will immediately notify the Client and the Archaeological Curator on discovery of any material covered, or potentially covered, by the Treasure Act 1996 (as amended by The Coroners and Justice Act 2009). All information required by the Treasure Act (i.e. finder, location, material, date, associated items etc.) will be reported to the Coroner within 14 days.

A11.8.7.2.4 Finds Processing

⁴⁴³~~116~~ All retained finds will, as a minimum be washed, weighed, counted and identified. They will then be recorded to a level appropriate to the aims and objectives of the Development. The report will include a table of finds by period and/or feature group.

⁴⁴⁴~~117~~ Metalwork from stratified contexts will be X-rayed and along with other fragile and delicate materials, stored in a stable environment. The X-raying of objects and other conservation needs will be undertaken by an appropriately qualified and approved conservation centre.

⁴⁴⁵¹¹⁸Artefacts and other finds will be suitably bagged and boxed in accordance with the guidance given by the relevant museum and generally in accordance with the standards of the ClfA (2014).

A11.8.7.3 ENVIRONMENTAL SAMPLING

A11.8.7.3.1 Introduction

⁴⁴⁶¹¹⁹All sampling will adhere to the principles outlined in Historic England's Guidance (English Heritage 2011 and Historic England 2015c).

A11.8.7.3.2 Sampling Strategy

⁴⁴⁷¹²⁰Depending on the size, complexity and duration of the work, the formulation of a site-specific sampling strategy will be considered at an early stage. Initially informed by prior works or predicted conditions, the strategy will be developed and adapted as the excavation continues, with support provided by specialist site visits and/or phone advice as appropriate. The aim of the strategy will be to effectively target the identified archaeology in order to address the aims and objectives of the Development, if appropriate with reference to local or regional research agendas.

A11.8.7.3.3 Sampling Methods

⁴⁴⁸¹²¹Bulk environmental soil samples, for the recovery of plant macrofossils, wood charcoal, small animal bones and other small artefacts, will be taken as appropriate from well-sealed and dateable contexts or features. In general, features directly associated with particular activities (e.g. pits, latrines, cesspits, hearths, ovens, kilns, and corn driers) should be prioritised for sampling over features such as ditches or postholes which are likely to contain reworked and residual material.

⁴⁴⁹¹²²If waterlogged or mineralised deposits are encountered an environmental sampling strategy will be devised. Specialist guidance will be provided by a geoarchaeologist, with site visits undertaken as required.

⁴²⁰¹²³Any sample will be of an appropriate size- typically 40 litres for the recovery of environmental evidence from dry contexts, and 10 litres from waterlogged deposits

⁴²⁴¹²⁴Following specialist advice, other sampling methods such as monolith, Kubiena or contiguous small bulk (column) samples may be employed to enable investigation of deposits with regard to microfossils (e.g. pollen, diatoms) and macrofossils (e.g. molluscs, insects), soil micromorphological and soil chemical analyses.

A11.8.7.3.4 Environmental Processing

⁴²²¹²⁵Bulk environmental soil samples will be processed by standard flotation methods and scanned to assess the environmental potential of deposits. The flot will be retained on a 0.25 mm mesh, with residues fractionated into 5.6/4 mm, 2 mm, 1 mm and 0.5 mm and dried if necessary. Coarse fraction (>5.6/4mm) will be sorted, weighed and discarded, with any finds recovered given to the appropriate specialist. Finer residues will be retained until after any analyses and discarded following final reporting.

~~423~~¹²⁶ In the case of samples from cremation related deposits the flots will be retained on a 0.25 mm mesh, with residues fractionated into 4 mm, 2 mm and 1 mm. In the case of samples from inhumation deposits, the sample will be artefact sieved through 9.5mm and 1mm mesh sizes. The coarse fractions (9.5mm) will be sorted with any finds recovered given to the appropriate specialist together with finer residues.

~~424~~¹²⁷ Any waterlogged or mineralised samples will be processed by standard waterlogged flotation methods.

A11.8.7.4 POST-EXCAVATION ASSESSMENT

~~425~~¹²⁸ The Post-Excavation Assessment will assess the results of the fieldwork against the aims, objectives and research questions identified in the WSI(s) and identify opportunities for analysis, publication and community engagement.

~~426~~¹²⁹ A fieldwork archive will be created, involving the processing and packaging of finds and samples and entering these into a database. The object of the initial processing is to create a checked and ordered corpus of data, with supporting stratigraphic matrices, and digitised feature plans.

~~427~~¹³⁰ The post-excavation assessment allows a review of the findings and identifies the need for further analytical work or where less significant remains are found- no further work. The assessment will inform the analysis and publication stage by creating a revised framework of priorities following the completion of the fieldwork. The post-excavation assessment will be submitted to the relevant stakeholders for approval.

A11.8.7.4.1 Reporting

~~428~~¹³¹ Following each stage of archaeological fieldwork, a draft post-excavation assessment report will be submitted to the Archaeological Curator.

~~429~~¹³² Each report should include, as a minimum, the following elements:

- A non-technical summary;
- Archaeological and historical context;
- Aims and objectives;
- Methods;
- Results – stratigraphic, finds and environmental;
- Archive preparation and deposition arrangements;
- Appendices;
- Illustrations; and
- References.

~~430~~¹³³ Full details of the requirements for each report will be discussed within the WSI.

~~434~~¹³⁴ Should remains of sufficient significance be encountered which warrant further post-excavation analysis, an updated project design should be included with the relevant report, the amendments to which should be made in consultation with the Archaeological Curator.

A11.8.7.5 PUBLICATION, DISSEMINATION AND HERITAGE INTERPRETATION

⁴³²¹³⁵ Where the post-excavation assessment has identified that further analysis should be carried out this will be undertaken in accordance with the updated project design. The post-excavation assessment will make recommendations for appropriate publication and dissemination of the results based on the significance of the findings. This could include journal publication, booklet, exhibitions or web-based initiatives.

A11.8.7.5.1 Heritage Interpretation and Community Engagement

⁴³³¹³⁶ Public benefit and engagement with the community could help to offset some of the physical effects of the Development. This would enhance the public value and engagement with the historic environment, contribute to place-making and provide information to the public on the special archaeological and historic interest of the area. The form of the community engagement will be dependent upon the findings of the investigations.

⁴³⁴¹³⁷ A potential location for a community archaeological project has been identified at the site of the proposed community orchard south of Vicarage Lane, North Muskam. This would be subject to a WSI under this AMS. Similar opportunities may exist in relation to heritage assets at the former RAF Ossington.

A11.8.7.6 ARCHIVE PREPARATION AND DEPOSITION

⁴³⁵¹³⁸ It is recommended that the project archive resulting from the excavation be deposited with a suitable museum. Newark and Sherwood District Council Museum Service are currently accepting archives dependant on space. In the absence of a museum in the area actively collecting archaeological archives at the time of deposition, the archive will be stored by the Principal Contractor until such time as the situation is resolved.

A11.8.7.6.1 Preparation of Archive

⁴³⁶¹³⁹ The complete archive which may include paper records, graphics, artefacts, ecofacts and digital data, will be prepared following the standard conditions for the acceptance of excavated archaeological material by the accepting museum, and in general following nationally recommended guidelines (SMA 1995; CIFA 2014c, Brown 2011; ADS 2013). The archive will usually be deposited within one year of the completion of the Development, with the agreement of the Client.

A11.8.8 LONG TERM MANAGEMENT

A11.8.8.1 Archaeological Management Plan

⁴³⁷¹⁴⁰ Should any remains of national or international importance be identified in Stage 2 or 3 investigations which require preservation in situ, an Archaeological Management Plan will be required.

⁴³⁸¹⁴¹ An Archaeological Management Plan (AMP) is a document prepared to aid the effective management of a monument for the future, as well as to provide a framework for standard maintenance ensuring the longevity of the

monument within the landscape. An AMP would set out the long-term objectives for the management of nationally significant archaeology and outline specific proposals for appropriate management and maintenance operations, where such remains to be identified.

~~439~~¹⁴² The key principles of the AMP would be to;

- Propose and undertake measures designed to minimise degradation of archaeological remains;
- Promote understanding of the archaeological resource;
- Remove features/vegetation which detract from the character or affect the below ground survival of archaeological remains; and
- Reinststate/repair or stabilise areas which have been previously lost or damaged.

~~440~~¹⁴³ The AMP would set out the vulnerabilities and potential threats to the archaeological remains as well as identifying opportunities for improving enhancing their significance and ensuring their ongoing conservation. Opportunities for positive change will be outlined for the short and long term, and it will be necessary to review and update the AMP on a regular basis as issues are addressed to ensure that the remains are continuously managed for future generations and enjoyment of the monument.

A11.8.9 REFERENCES

- ⁴⁴⁴¹⁴⁴ ADS 2013 *Caring for Digital Data in Archaeology: a guide to good practice*.
Archaeology Data Service & Digital Antiquity Guides to Good Practice
- ⁴⁴²¹⁴⁵ British Geological Survey *Geology of Britain Viewer*
<http://mapapps.bgs.ac.uk/geologyofbritain/home.html>
- ⁴⁴³¹⁴⁶ Brown, D H 2011 *Archaeological Archives: a guide to best practice in
creation, compilation, transfer and curation* (revised edition). Archaeological
Archives Forum
- ⁴⁴⁴¹⁴⁷ Chartered Institute for Archaeologists (CIfA) 2014a, *Code of Conduct*.
- ⁴⁴⁵¹⁴⁸ Chartered Institute for Archaeologists [CIfA] 2023a. Standard and Universal
Guidance for Archaeological Field Evaluation. Reading: Chartered Institute
for Archaeologists. Available at [Layout 1 \(archaeologists.net\)](#) and [Layout 1
\(archaeologists.net\)](#)
- ⁴⁴⁶¹⁴⁹ CIfA, 2023b. Standard and Universal Guidance for Archaeological
Excavation. Reading: Chartered Institute for Archaeologists. Available at:
[Layout 1 \(archaeologists.net\)](#) and [Layout 1 \(archaeologists.net\)](#)
- ⁴⁴⁷¹⁵⁰ CIfA, 2023c. Standard and Universal Guidance for archaeological monitoring
and recording. Reading: Chartered Institute for Archaeologists. Available at:
[Layout 1 \(archaeologists.net\)](#) and [Layout 1 \(archaeologists.net\)](#)
- ⁴⁴⁸¹⁵¹ CIfA 2014a. *Standard and Guidance for the Collection, Documentation,
Conservation and Research of Archaeological Materials* (revised edition
October 2020). Reading: CIfA.
- ⁴⁴⁹¹⁵² CIfA 2014b. *Standard and Guidance for the Creation, Compilation, Transfer
and Deposition of Archaeological Archives* (revised edition October 2020).
Reading: CIfA.
- ⁴⁵⁰¹⁵³ CIfA 2014c. *Code of Conduct* (revised edition October 2022). Reading: CIfA.
- ⁴⁵¹¹⁵⁴ CIfA 2019. *Regulations for Professional Conduct* (revised edition July 2021).
Reading: CIfA.
- ⁴⁵²¹⁵⁵ CIfA 2022a. *Toolkit for Specialist Reporting*
<https://www.archaeologists.net/reporting-toolkit> (accessed 19/12/2023).
- ⁴⁵³¹⁵⁶ CIfA 2022b. *Toolkit for Selecting Archaeological Archives*
<https://www.archaeologists.net/selection-toolkit> (accessed 19/12/2023).
- ⁴⁵⁴¹⁵⁷ Department for Communities and Local Government (DCLG) 2025. National
Planning Policy Guidance.
- ⁴⁵⁵¹⁵⁸ DCMS October 2013. *Scheduled Monuments & nationally important but non-
scheduled monuments*. Available at:
[https://www.gov.uk/government/publications/scheduled-monuments-policy-
statement](https://www.gov.uk/government/publications/scheduled-monuments-policy-statement)
- ⁴⁵⁶¹⁵⁹ English Heritage 2008. *Conservation Principles, Policies and Guidance for
the Sustainable Management of the Historic Environment*. Available at:
[https://historicengland.org.uk/images-books/publications/conservation-
principles-sustainable-management-historic-
environment/conservationprinciplespoliciesandguidanceapril08web/](https://historicengland.org.uk/images-books/publications/conservation-principles-sustainable-management-historic-environment/conservationprinciplespoliciesandguidanceapril08web/)

- ~~457~~160 English Heritage 2011 *Environmental Archaeology: A Guide to the Theory, Practice of Methods, from Sampling and Recovery to Post-excavation* (second edition). Portsmouth, English Heritage
- ~~458~~161 Historic England 2008. MoRPHE Project Planning Note 3: 'Archaeological Excavation'
- ~~459~~162 Historic England 2015a. *Managing Significance in Decision-Taking in the Historic Environment: Historic Environment Good Practice Advice in Planning Note 2*. Available at: <https://historicengland.org.uk/images-books/publications/gpa2-managing-significance-in-decision-taking/>
- ~~460~~163 Historic England 2015b. *Management of Research Projects in the Historic Environment: the MoRPHE project managers' guide*. Swindon, Historic England
- ~~464~~164 Historic England 2016a. Preserving Archaeological Remains. Decision-taking for Sites under Development.
- ~~462~~165 McKinley, J I 2013 Cremation: excavation, analysis and interpretation of material from cremation-related contexts, in S Tarlow and L Nilsson Stutz (eds) *The Oxford Handbook of the Archaeology of Death and Burial*. Oxford University Press 147–71
- ~~463~~166 McKinley, J I and Roberts, C 1993 ClfA Technical Paper 13 *Excavation and Post-excavation Treatment of Cremated and Inhumed Human Remains*
- ~~464~~167 Great North Road Solar and Biodiversity Park. Environmental Statement. Volume 2 – Chapter 11 Cultural Heritage and Archaeology [EN010162/APP/6.2.11].
- ~~465~~168 SMA 1993 *Selection, Retention and Dispersal of Archaeological Collections*. Society of Museum Archaeologists
- ~~466~~169 SMA 1995 *Towards an Accessible Archaeological Archive*. Society of Museum Archaeologists
- ~~467~~170 Watkinson, D and Neal, V 1998 *First Aid for Finds: practical guide for archaeologists*. United Kingdom Institute for Conservation of Historic & Artistic Works
- ~~468~~171 Wessex Archaeology, 2023. *Land to the west of A1, North of Staythorpe, Nottinghamshire: Detailed Gradiometer Survey Report*. Unpublished document ref: 268310.01
- ~~469~~172 Wessex Archaeology 2024a. *GNR Solar Farm Newark, Nottinghamshire: Archaeological Desk-Based Assessment*. Unpublished Ref. No.: 276500.01.
- ~~470~~173 Wessex Archaeology 2024b. *GNR Solar Farm Newark, Nottinghamshire: Written Scheme of Investigation for Archaeological Evaluation Phase 2*. Unpublished Ref. No.: 276500.04.
- ~~474~~174 Wessex Archaeology 2025. *GNR Solar and Biodiversity Park, Nottinghamshire. Geoarchaeological Desk-based Assessment and Landscape Characterisation*. Unpublished Ref. No.:276503.01.

APPENDIX A: WSI SPECIFICATION

A WSI is a document that relates to elements of archaeological fieldwork and details specific measures to be applied or adopted as part of the programme of archaeological mitigation works. The WSI will:

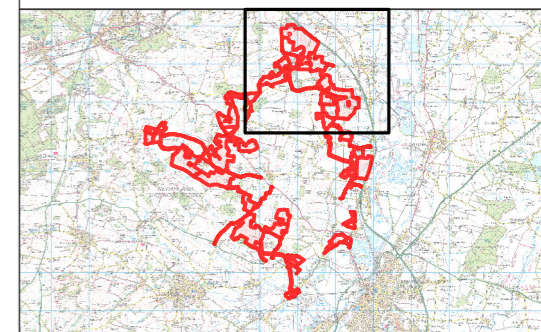
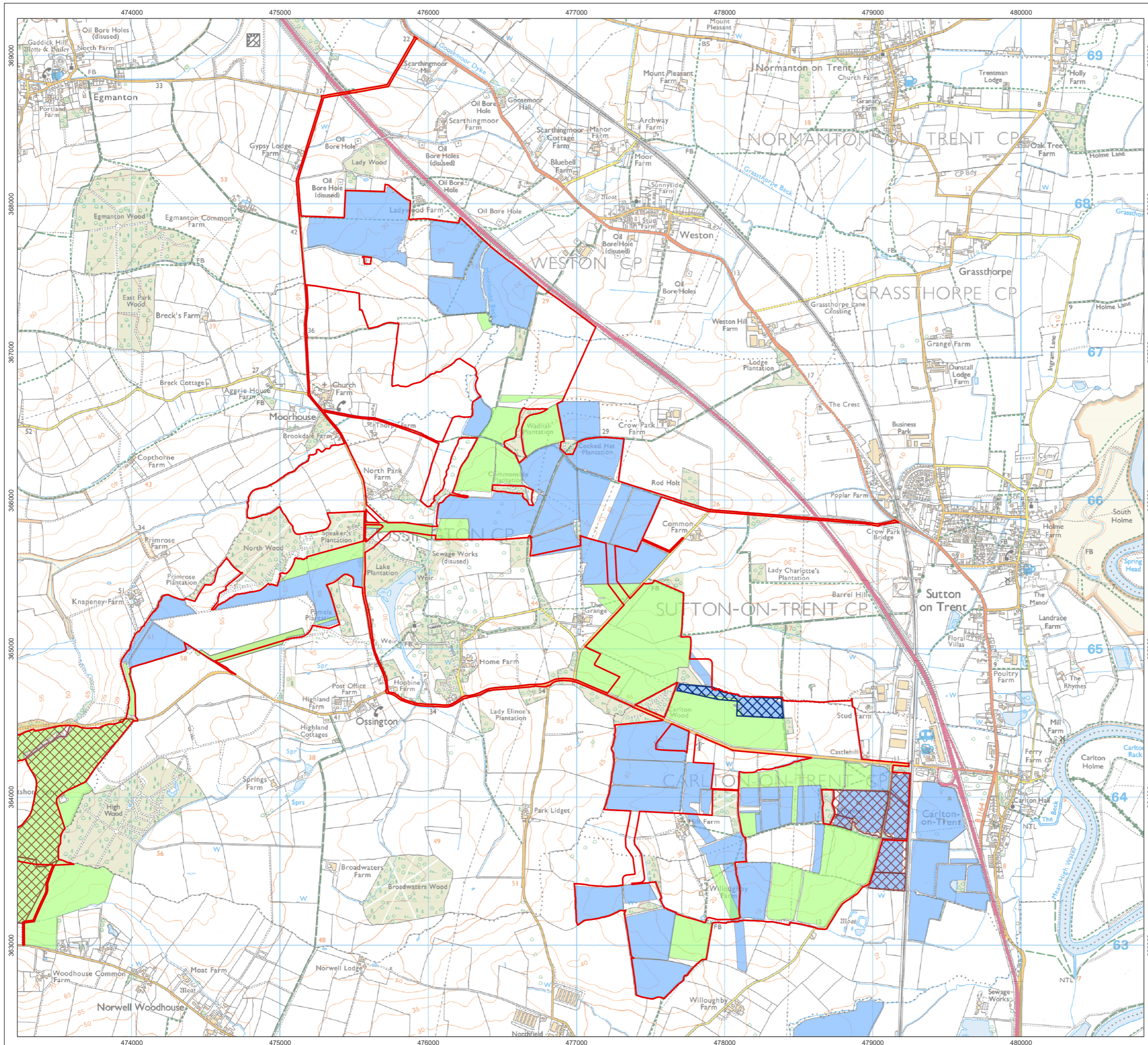
- Identify the aims and objectives for each element of the archaeological works;
- Summarise the archaeological and historical background, including the results of the work undertaken to date;
- Detail the proposed methodologies that will be implemented and form the central basis by which the investigation can be measured;
- Provide details on the provision of site welfare and plant equipment, in accordance with archaeological requirements and relevant Health and Safety legislation as appropriate;
- Include details of a proposed timetable/programme for archaeological works, post excavation and reporting following completion of works;
- Detail proposed archiving;
- Provide details of company Health and Safety Policy, evidence of insurance and a risk assessment for the Project; and
- Provide details of any external specialists and other third parties to be used in the preparation of the fieldwork reports.

The WSI will conform to guidelines and standards set out in the following documents, or such equivalent applicable standards as may be in place at the time of the works being carried out:

- Standard for archaeological field evaluation, Chartered Institute for Archaeologists: Reading (CIfA 2023a) ;
- Standards and guidance for the collection, documentation, conservation and research of archaeological materials, Chartered Institute for Archaeologists: Reading (CIfA 2020a) ;
- Code of conduct: professional ethics in archaeology, Chartered Institute for Archaeologists: Reading (CIfA 2022) ;
- Standard and guidance for the creation, compilation, transfer and deposition of archaeological archives, Chartered Institute for Archaeologists: Reading (CIfA 2020b) ;
- Standard and guidance for archaeological excavation, Chartered Institute for Archaeologists: Reading (CIfA 2023b) ;
- Standard and guidance for an archaeological watching brief, Chartered Institute for Archaeologists: Reading (CIfA 2023c) ; and,
- Management of Research Projects in the Historic Environment: The MoRPHE Project Managers' Guide, Historic England: London (HE 2015) .

In addition, NCC specifications that may be relevant will be adhered to, or such equivalent specifications as may be in place at the time of the works being carried out.

ⁱ CIfA 2023a. Standard for archaeological field evaluation. Chartered Institute for Archaeologists. Reading. Accessed April 2024: <https://www.archaeologists.net/codes/cifa>



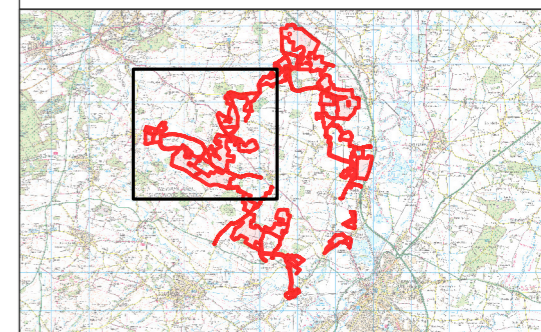
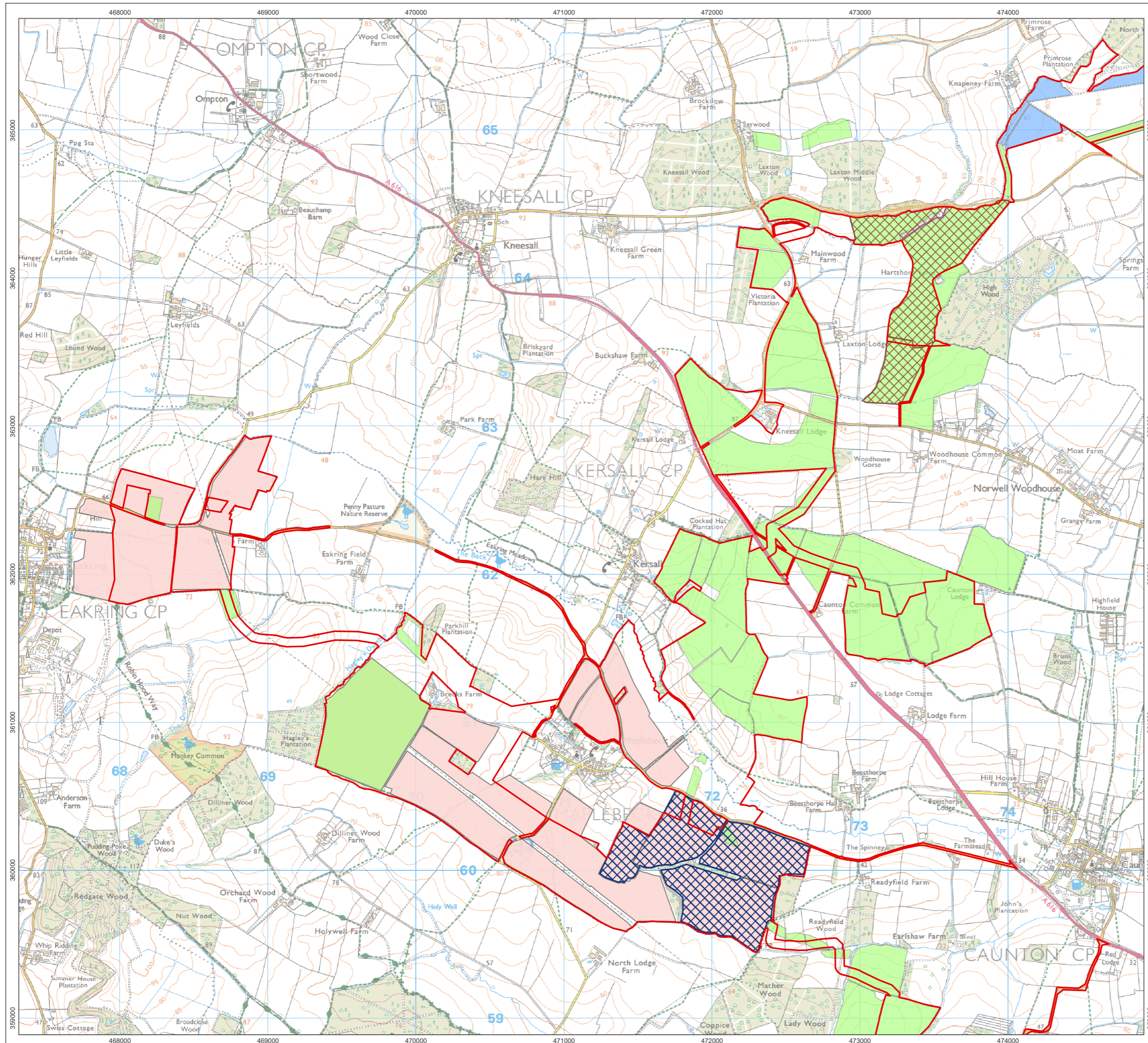
- Order Limits
- AOC Geophysics
- Wessex Archaeology Geophysics
- Magnitude Geophysics
- Phase 1 Evaluation Area
- Phase 2 Evaluation Area



1:25,000 Scale @ A3
 0 0.25 0.5 1 km
 Ref: 276500-AMS Date: 26/06/2025

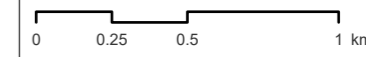
**Stage 1 Geophysical Survey and Trenching:
Figure A11.8.1A**

**Great North Road Solar and Biodiversity Park
Environmental Statement**



- Order Limits
- AOC Geophysics
- Wessex Archaeology Geophysics
- Magnitude Geophysics
- Phase 1 Evaluation Area
- Phase 2 Evaluation Area

1:25,000 Scale @ A3

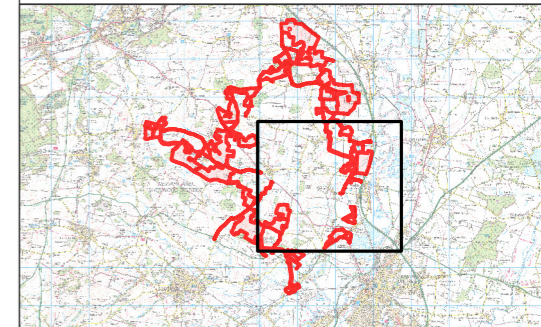
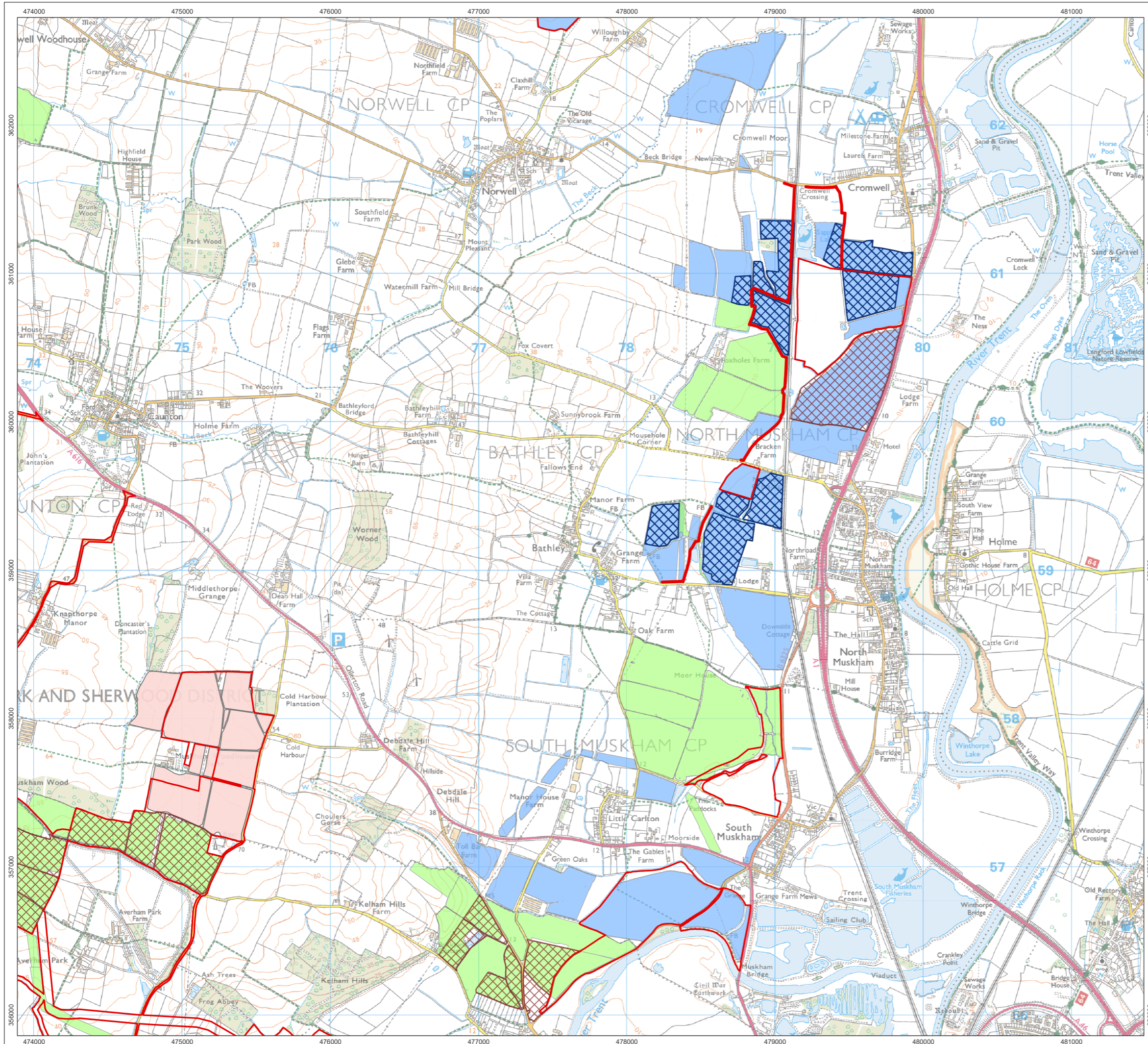


Ref: 276500-AMS Date: 26/06/2025



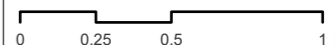
**Stage 1 Geophysical Survey and Trenching:
Figure A11.8.1B**

**Great North Road Solar and Biodiversity Park
Environmental Statement**



- Order Limits
- AOC Geophysics
- Wessex Archaeology Geophysics
- Magnitude Geophysics
- Phase 1 Evaluation Area
- Phase 2 Evaluation Area

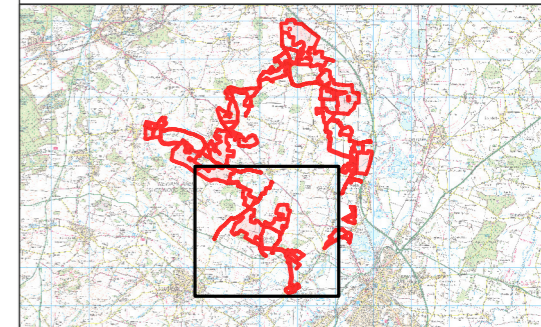
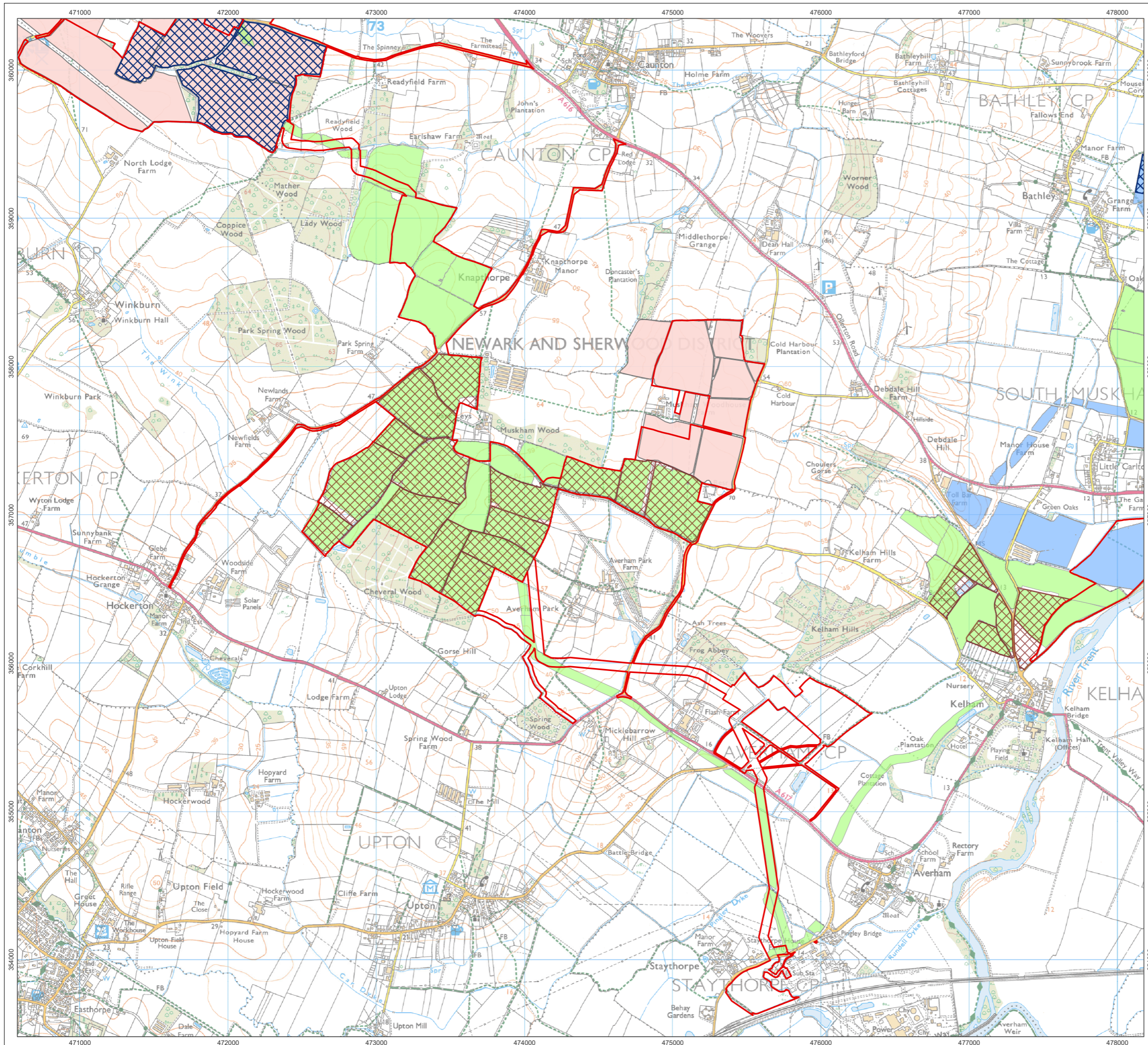
1:25,000 Scale @ A3



Ref: 276500-AMS Date: 26/06/2025

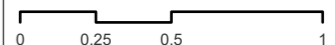
Stage 1 Geophysical Survey and Trenching: Figure A11.8.1C

Great North Road Solar and Biodiversity Park
Environmental Statement



- Order Limits
- AOC Geophysics
- Wessex Archaeology Geophysics
- Magnitude Geophysics
- Phase 1 Evaluation Area
- Phase 2 Evaluation Area

1:25,000 Scale @ A3



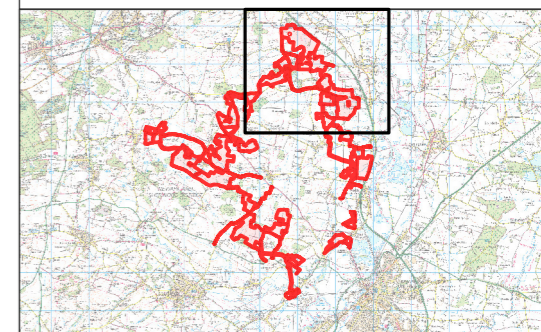
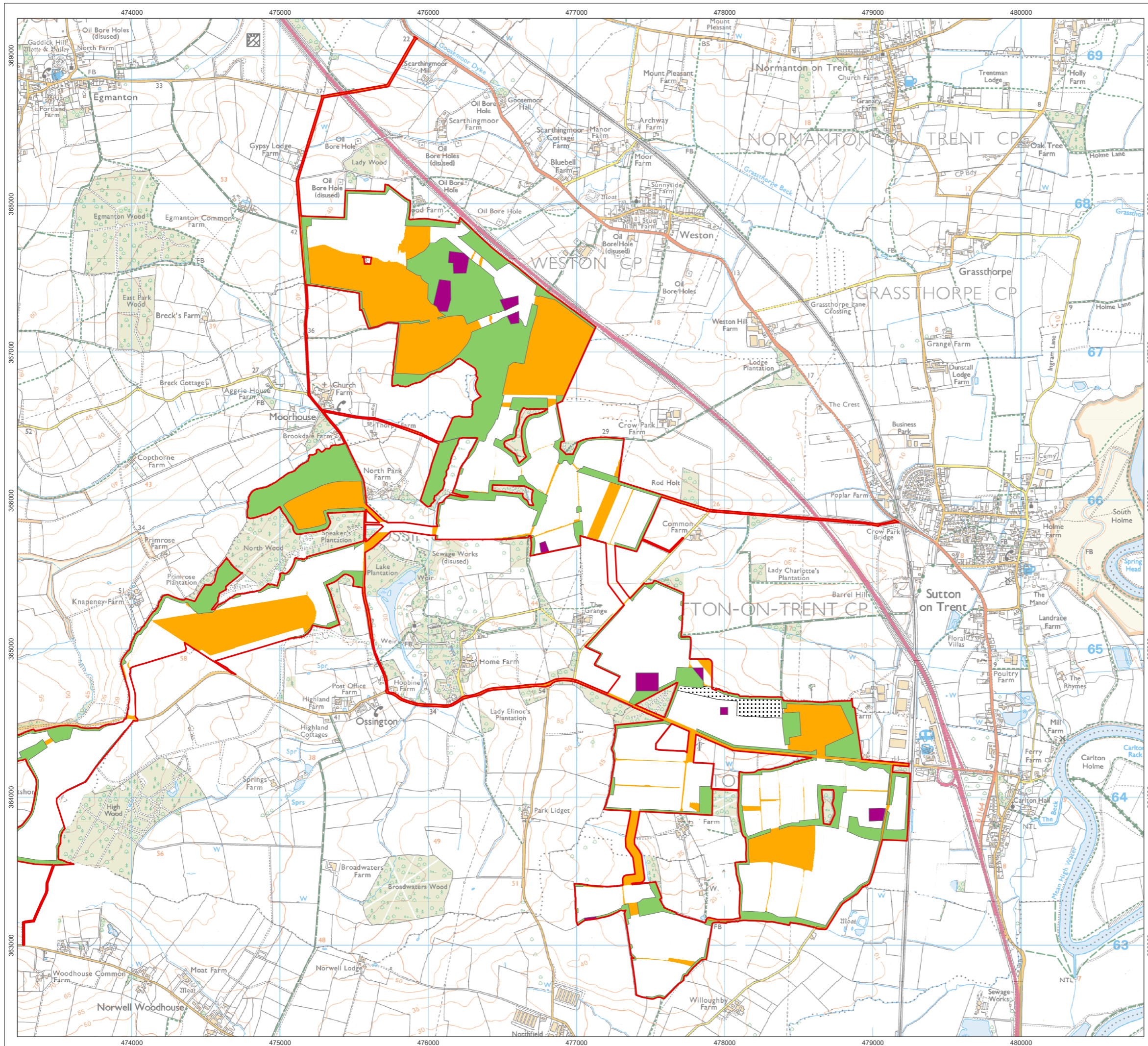
Ref: 276500-AMS






Date: 26/06/2025



**Stage 1 Geophysical Survey and Trenching:
Figure A11.8.1D**

**Great North Road Solar and Biodiversity Park
Environmental Statement**



-  Order Limits
-  Areas excluded from development (mitigation)
-  Archaeological preservation in situ (mitigation)
-  Trial Trenching Completed at Stage 1
-  Areas not subject to any Stage 1 investigation

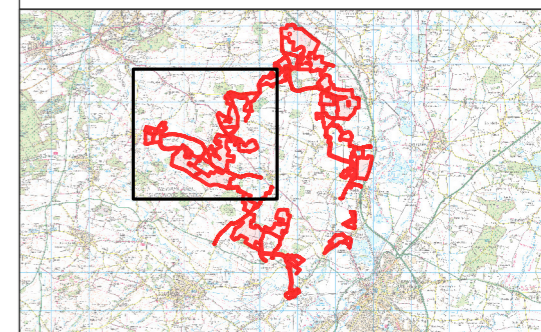
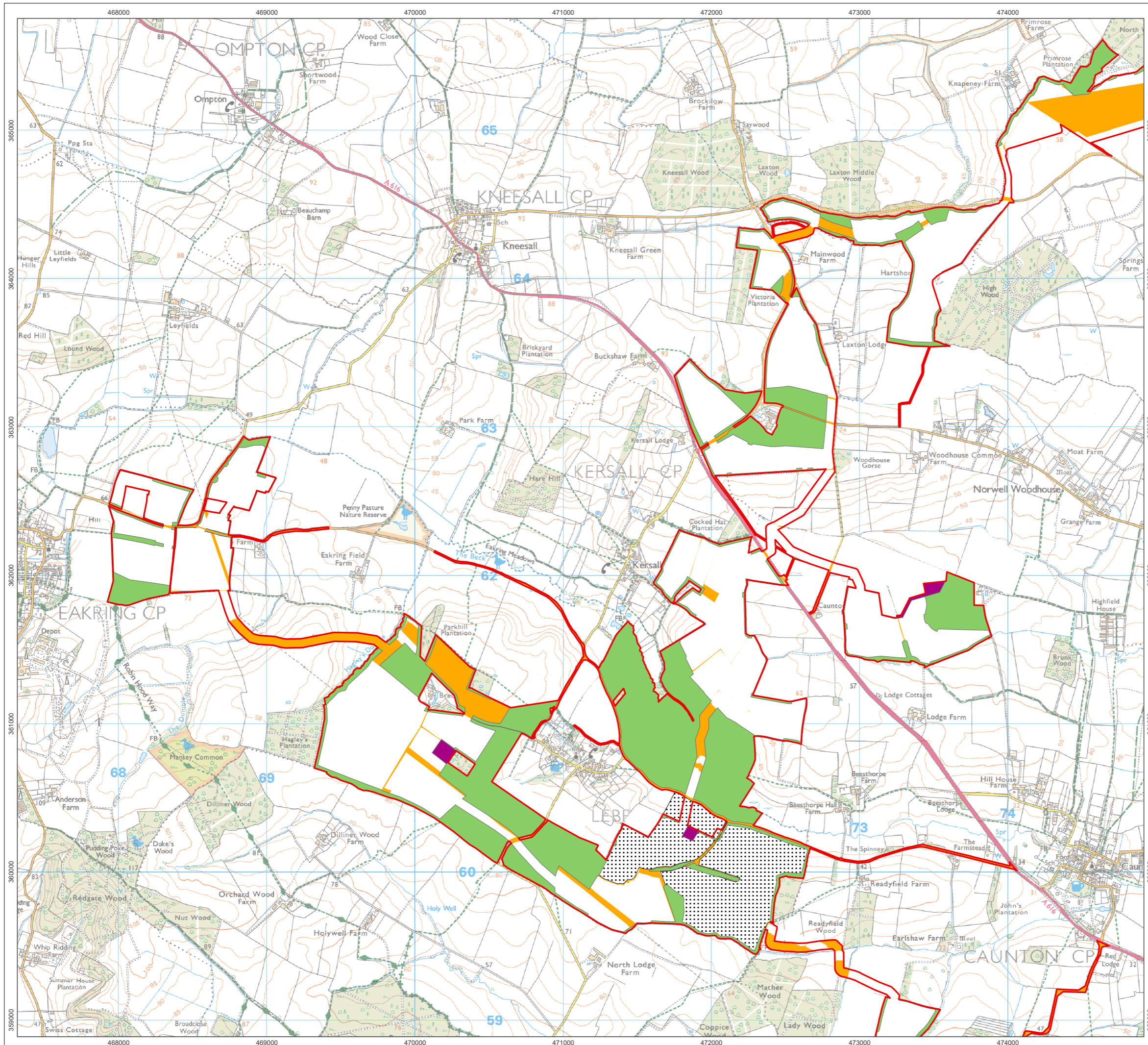







1:25,000 Scale @ A3
 0 0.25 0.5 1 km

Ref: 276500-AMS Date: 26/06/2025

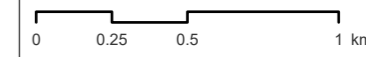
**Information for Stage 2
 Investigations: Figure A11.8.2A**

**Great North Road Solar and
 Biodiversity Park
 Environmental Statement**



-  Order Limits
-  Areas excluded from development (mitigation)
-  Archaeological preservation in situ (mitigation)
-  Trial Trenching Completed at Stage 1
-  Areas not subject to any Stage 1 investigation

1:25,000 Scale @ A3

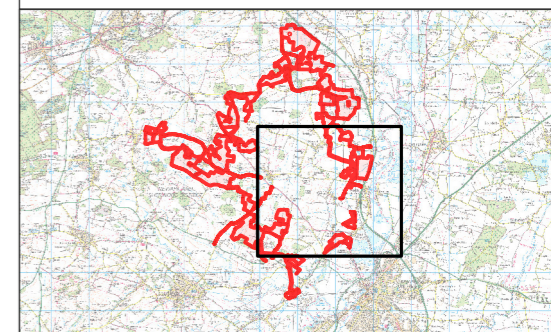
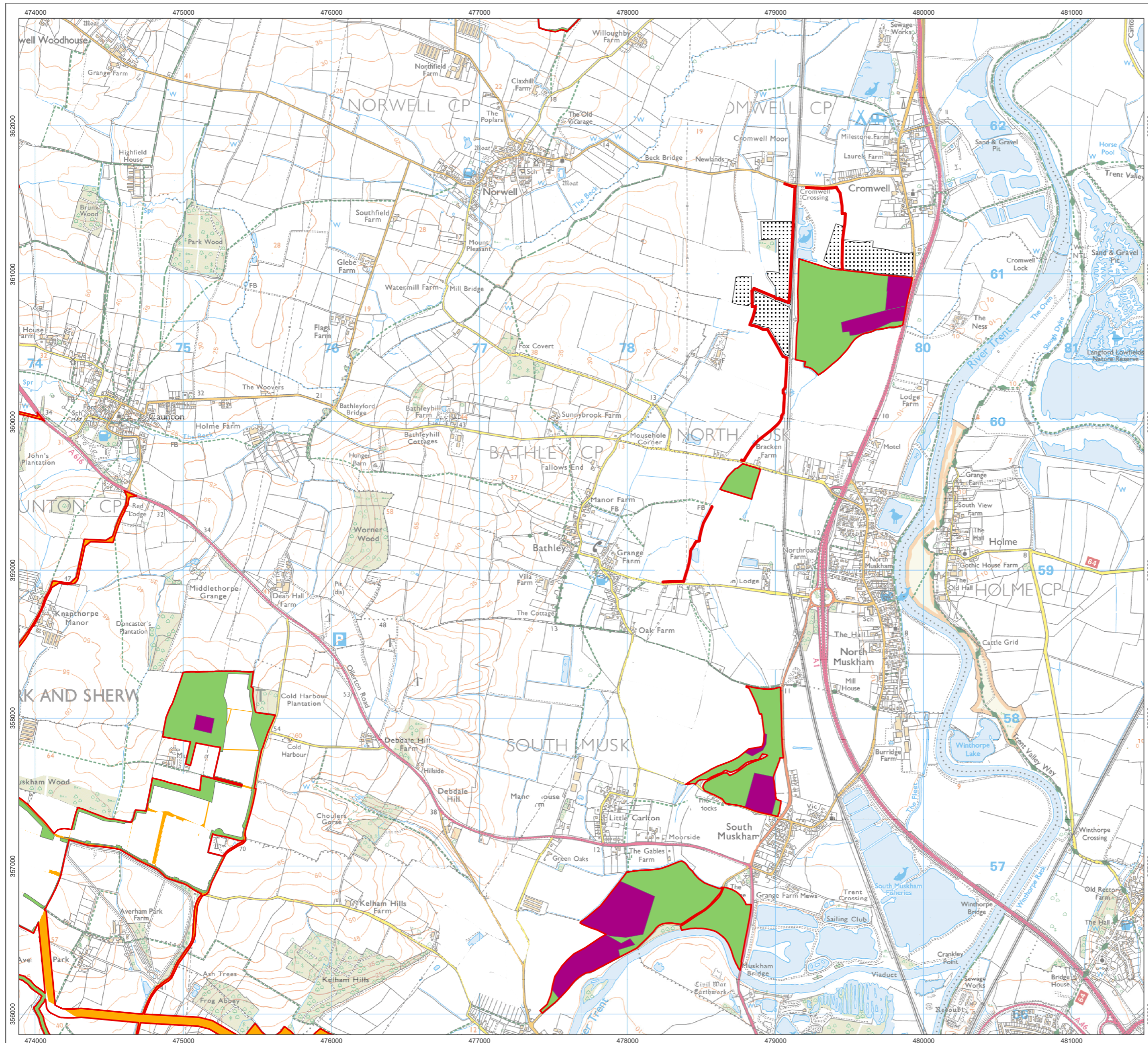


Ref: 276500-AMS Date: 26/06/2025



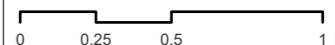
**Information for Stage 2
Investigations: Figure A11.8.2B**

**Great North Road Solar and
Biodiversity Park
Environmental Statement**



-  Order Limits
-  Areas excluded from development (mitigation)
-  Archaeological preservation in situ (mitigation)
-  Trial Trenching Completed at Stage 1
-  Areas not subject to any Stage 1 investigation

1:25,000 Scale @ A3



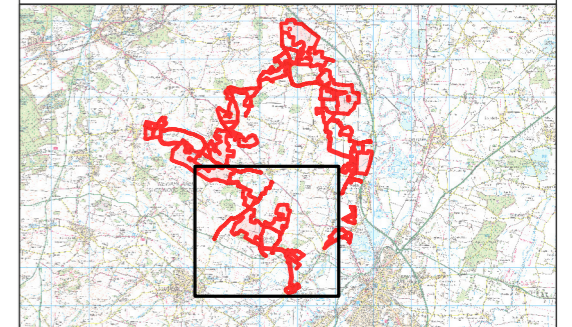
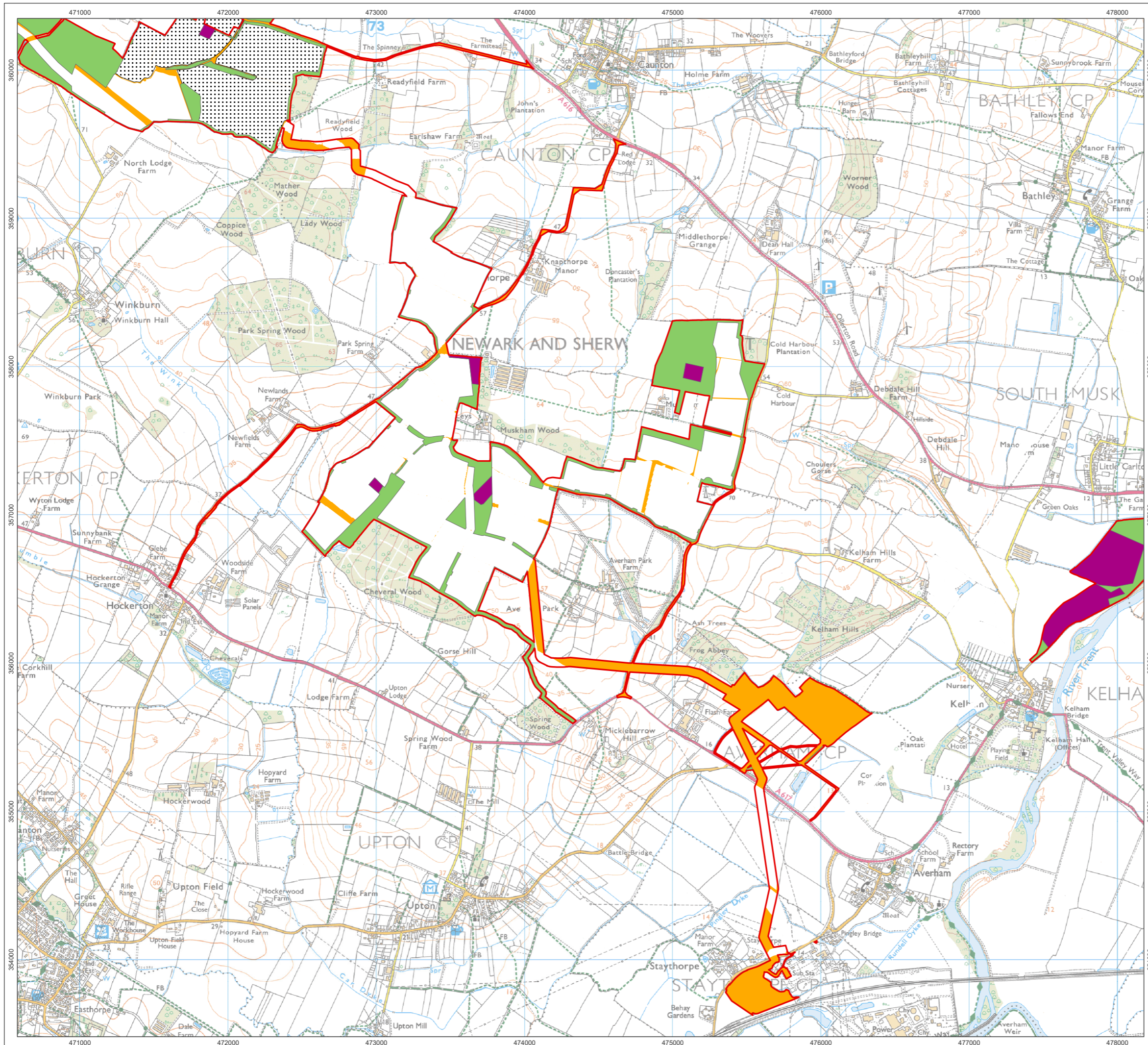
Ref: 276500-AMS

Date: 26/06/2025



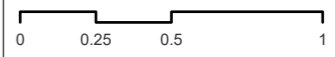
**Information for Stage 2
Investigations: Figure A11.8.2C**

**Great North Road Solar and
Biodiversity Park
Environmental Statement**



- Order Limits
- Areas excluded from development (mitigation)
- Archaeological preservation in situ (mitigation)
- Trial Trenching Completed at Stage 1
- Areas not subject to any Stage 1 investigation

1:25,000 Scale @ A3



Ref: 276500-AMS

Date: 26/06/2025



**Information for Stage 2
Investigations: Figure A11.8.2D**

**Great North Road Solar and
Biodiversity Park
Environmental Statement**